



Dromgoole, Gammill announce engagement

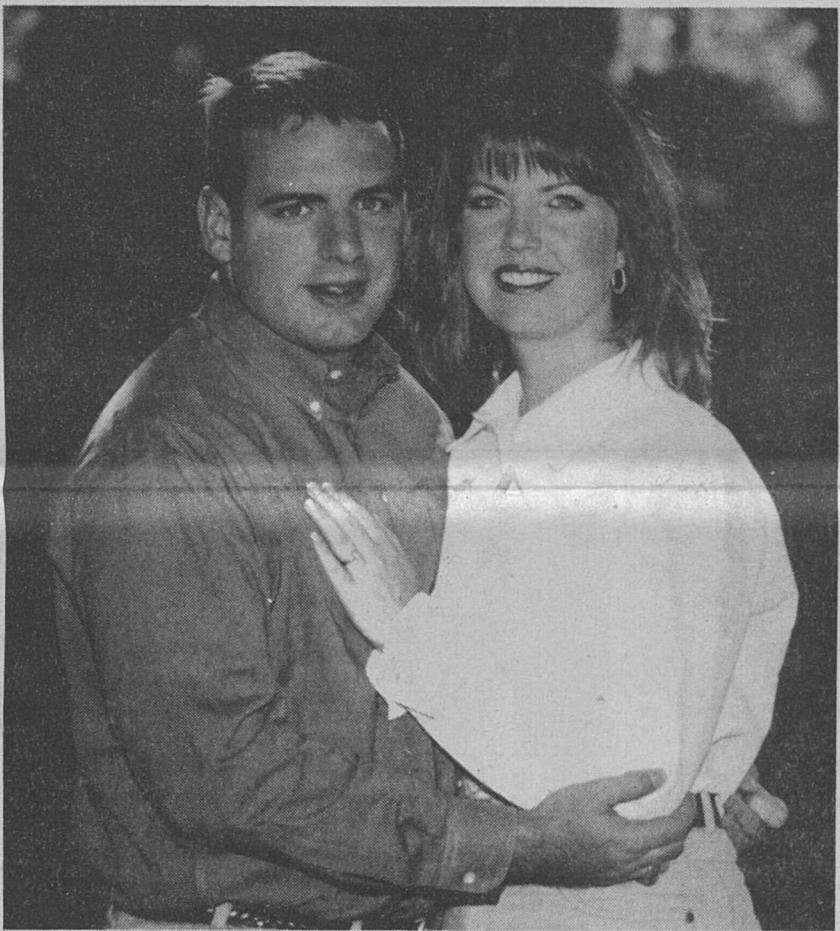
Carol Joy Dromgoole of Bonus is pleased to announce the engagement of her daughter, Dena Shea Dromgoole, to Ari Renoir Gammill, son of Mr. and Mrs. Rusty Gammill of Brandon, Florida.

Dena Shea is a 1992 graduate of East Bernard High School and a 1997 graduate of The University of Texas at Austin. She has a Bachelor of Science degree in Pharmacy and is the manager of HEB Pharmacy in Wharton.

Ari is a 1990 graduate of Bloomingdale High School in Valrico, Florida, and a 1997 graduate of The University of Texas at Austin. He received a Bachelor of Science degree in Kinesiology. Ari is a Warrant Officer in the Texas Army National Guard and is currently stationed in Fort Rucker, Alabama for flight training.

The couple announced their engagement at party given by Carol Joy Dromgoole on Sept. 9.

They plan to exchange vows August 18, 2001 at the First Baptist Church in El Campo.



Leopold, Sharp to wed in December

Mr. and Mrs. Frederick Leopold of Nada are pleased to announce the engagement and upcoming marriage of their daughter, Amy Marie, to Mr. Andrew David Sharp, son of Mr. and Mrs. Robert Sharp of South Bend, Indiana.

The bride-elect is a 1993 graduate of Rice High School and a 1997 graduate of the University of Notre Dame. At Notre Dame, Amy received Bachelor's degrees in Computer Applications and American Studies.

The prospective groom is a 1993 graduate of John Adams High School in South Bend and a 1997 graduate of the University of Notre Dame. At Notre Dame, Andrew received a Bachelor's degree in American Studies. Amy is currently employed by Headstrong, a global e-solutions consulting firm.

Andrew is currently employed by Apcoa-Standard Parking in management.

The wedding is planned for December 30, 2000 at St. Mary's Catholic Church in Nada.

The couple plans to reside in Houston.

Mark your calendar for Oct. 28!

Plans are underway for the 21st Annual Study Club Auction held each year by the Eagle Lake Study Club for the benefit of the Eula and David Wintermann Library.

The event will be held Saturday, Oct. 28. It is hoped that the community will once again support this worthwhile effort by attending and bidding on the many outstanding items donated by dedicated friends of our wonderful library.

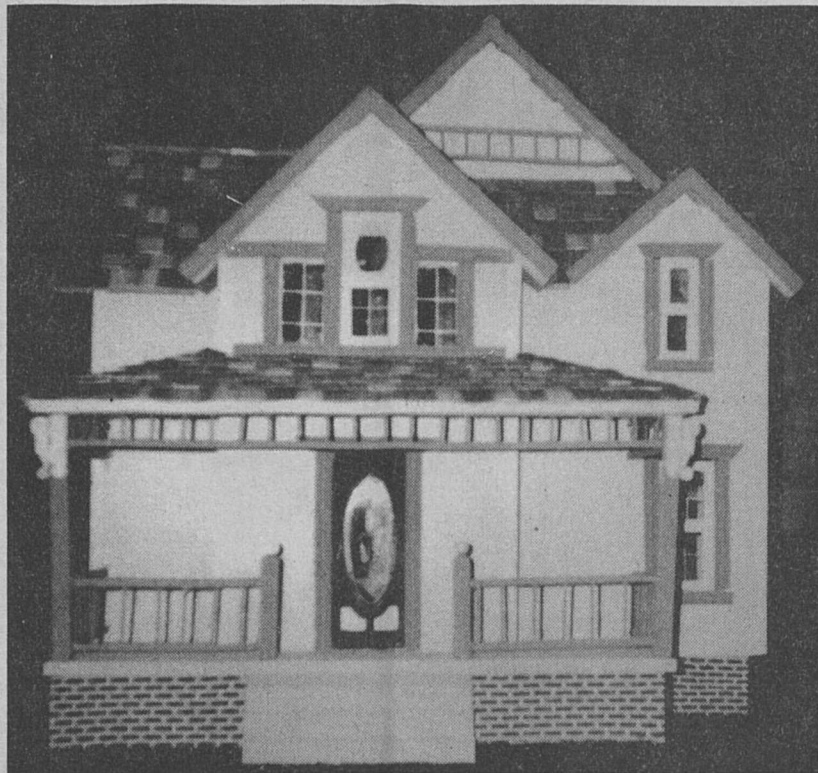
If anyone wishes to add to the list of donations, either for the silent or the main auction, please contact Betty

Wilcox at 979-234-3554 or Fair Wells at 234-3105.

Two items are ready for extra excitement: a two-story doll house made by Bob Wilcox and furnished by Fair Wells; and a small wooden Amish wagon holding two Amish dolls made by Barbara Davidson. The wagon was made by Mary Ann Reese Gallier.

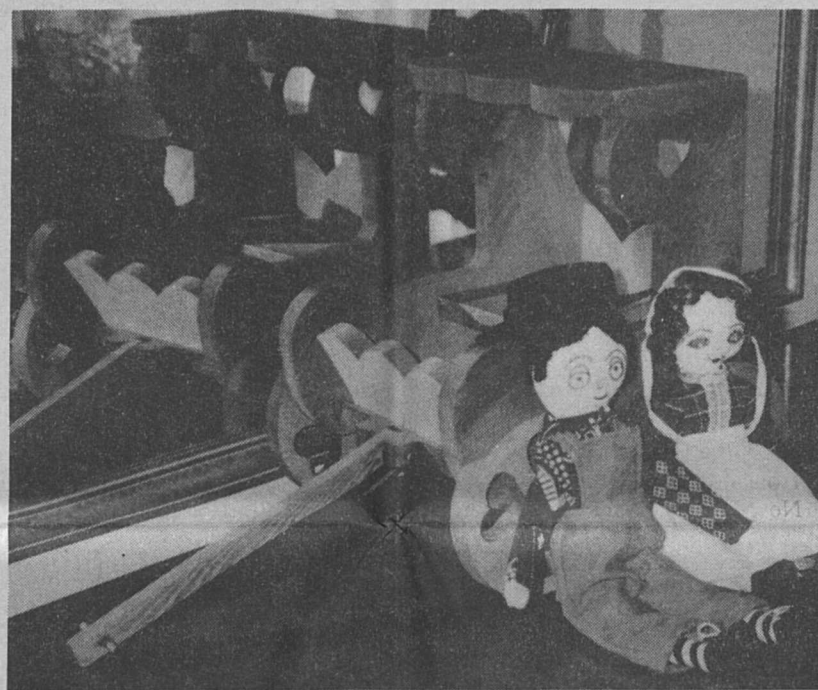
Raffle tickets are \$5 for each item and available at the library.

Please plan to join us on Oct. 28 for an evening of fun, knowing that you will be supporting your community library so important to all of us.



Two items are ready for the 21st Annual Study Club Auction Saturday Oct. 28. Pictured above is a two-story doll house made by Bob Wilcox and furnished by Fair Wells. Below is a small wooden Amish wagon holding two Amish dolls made by Barbara Davidson. The wagon was made by Mary Ann Reese Gallier.

Photos Courtesy of Fair Wells



Plant Society to visit Westcave

The Columbus Chapter of the Native Plant Society (NPSOT) of Texas has planned a field trip to Westcave Preserve, located in southwestern Travis County on RR 3238 (Hamilton Pool Road) Saturday, Sept. 23, at 9:15 a.m. for a guided tour.

Field trip participants will hike through two distinctly different natural ecosystems encompassed within the 30 acre preserve.

Upon entering the grounds, one is met by a typical Edward Plateau grassland savannah dotted with cactus, seasonal wildflowers, and stands of ashe juniper (*Juniperus ashei*) and oak (*Quercus spp.*).

The trail then leads through a limestone crevice into a sheltered canyon which was created by the gradual collapse of an ancient cave. At the head of the canyon a waterfall tumbles 40 feet and visitors can step into the grotto behind the waterfall to examine cave formations and lush plant life seen in few other places in Texas.

The hike into the canyon and back is one mile, so comfortable walking shoes and or boots are recommended. Children are welcomed with adult supervision but pets are not allowed on the Preserve.

To get there take Hwy. 71 west from Austin. Turn left onto Hamilton Pool Road (RR 3238) and proceed 14 miles. The entrance to Westcave is 1/2 mile past the low water bridge over the Pedernales River and will be on the right hand side of the road. The phone number at Westcave is 830-825-3442. Allow 2 to 2 1/4 hours travel time from the Columbus area.

Please arrive promptly at 9:15 a.m., as the Preserve opens for public tours shortly thereafter.

All plant and nature enthusiasts are welcomed to join in.

If you're interested in car pooling or need more information, call Kathy Burris, at 979-732-6188.



Happy 2nd Birthday Hailey Ferguson

Sept. 22, 1998

Love,
Mommy, Daddy
& Dylan



Ford
Lincoln
Mercury



Evinrude, Johnson,
Mercury, Honda,
Shoalwater, Dargel,
Shallow Sport, Carolina
Skiff and Hawk Bass &
Bay Boats



ATV - Mule



VONDERAU

1912 N. Mechanic • (979) 543-2753 • 1-800-441-5554

vonderau@wcnet.net • www.VonDerAuFLM.com

NEW MEETING IN NADA!

Weight Watchers and 1-2-3 Success® Are Coming To Your Town!

You can eat any food you crave and still lose weight on 1-2-3 Success®, our easiest plan ever:

- 1 We've given every food a **POINTS®** value.
- 2 Just stay within your Daily **POINTS®** Range, and
- 3 You'll lose weight!



Sarah,
Duchess of York,
Lifetime
Member

JOIN NOW FOR ONLY \$15!

Call 1-800-572-8600 or visit our website at
www.weightwatchers.com for more information.

Nada

St. Mary's Parish Hall
Old Nada Road

Every Wednesday at 6 p.m. starting September 13!

Check at our centers for details about our maintenance records. Registration and weigh-in begin one-half hour earlier than the times listed above. *Offer valid through 9/30/00. ©2000 Weight Watchers International, Inc., owner of the WEIGHT WATCHERS trademark. All rights reserved. Offer valid at participating locations for a limited time only. Not valid for The At Work Program or community meetings.

JOHN B. MYRES, D.D.S.
234-3525

Views On Dental Health

Located on 90-A
at Laughlin Road

WHITEN, BRIGHTEN OR SCRATCH?

When you brush your teeth, you want to clean and brighten, not scratch or wear away the enamel. Surprisingly, some "whiteners" and polishes are too abrasive for daily use. These are the dentifrices sold as tobacco and stain removers, marketed more for cosmetic than therapeutic appeal.

The object of brushing for most of us is to remove the yellow film caused by plaque (a sticky coating on the teeth) which is easily stained. Simple brushing, even with no paste, will free your teeth of this film.

Why then are there abrasives like

pumice and zirconium silicate in toothpaste? Low amounts enhance stain removal without harming enamel. High amounts, however, erode the tooth's surface and weaken its natural anti-decay defenses.

The best choice is a fluoride paste or gel with the minimum amount of abrasive to do the job. Make sure the tube bears the American Dental Association seal of approval.

Presented as a public service to promote better dental health. From the office of JOHN B. MYRES, D.D.S., 700 S. McCarty, Eagle Lake, 234-3525.

Affordable Dental Care for the Whole Family
•Gentle Family Dentistry •Nitrous Oxide Sedation
Available •All Phases of General Dentistry including
Cosmetic •Extractions •Wisdom Teeth, Root Canals,
Crowns, Bridges, Dentures & Partial and
Orthodontics •Insurance & New Patients Welcome
Open 8-5, Monday through Friday Saturday: 8-2
MasterCard and Visa Accepted After Hours Call: 979-733-3349

LIBRARY LINES

By Patti Holloway

The Wintermann Library appreciates the check donated by the Rice Growers Association and we want to thank Bill and Florence Carlson and Mrs. Theresa Galvan for the new children's videos.

Also, the library thanks everyone who has donated books and videos recently.

If the donated materials are currently in the library, we will put the donated items on the "for sale" shelf. We really appreciate your donations and one way or another your library will benefit from them.

Please check the racks next time you are in the library because we have quite a few new westerns in paperback.

Recently, we placed a table just inside the front door and are offering some of the older books that we have removed from the shelves for 50¢. These are children's books and we will be adding to the display from time to time.

We have a new display that Laura Mathys has put together (she is good at this). It features part of Laura Finney's teapot collection. Come by and see them; they are so cute.

(See Library, Page 10)

DAILY SPECIALS...

Monday & Tuesday: 2 Large

Single-Topping Pizzas... \$15⁹⁹

Wednesday: 1 Lg. & 1 Med.

Single-Topping Pizzas... \$14⁹⁹

Thursday: Large Pepperoni and
Reg. Calzone... \$13⁹⁹

Friday & Saturday: Large Pepperoni and
Large Supreme... \$16⁹⁹

Sunday: 2 Med. Single-Topping Pizzas... \$12⁹⁹



**SIMPLE
SIMON'S
PIZZA**

NOW OPEN:

Sun.-Thurs., 11 a.m. to 9 p.m.
Friday, 11 a.m. to 10 p.m.
Saturday, 11 a.m. to 9 p.m.

222 E. Main Eagle Lake
979-234-7519

Free Installation!!

DIRECTV®
Single-LNB
System
with one receiver
\$99⁹⁹

Programming extra. #16-2562
Dual-LNB System
with two receivers
\$199⁹⁹
Programming extra. #16-2563/2550



Monthly Service
as low as
\$21.99

Local
Programming
Available
at Extra Charge.

Single & Dual
Systems
In Stock!



RadioShack®
You've got questions. We've got answers.®

Located inside

EAGLE LAKE DRUGSTORE

702 S. McCarty

A RadioShack® Dealer

979-234-2502